
September 8th, 2024

**Board of Directors Members Present
in Person:**

Members Present via MS Teams:

**North Sound Behavioral Health
Administrative Services Organization
(North Sound BH-ASO) Staff Present:**

Guests Present:

- 1. Call to Order and Introductions** – Chair
- 2. Tribal Acknowledgement** – Chair
[Tribal Behavioral Health | North Sound BH-ASO \(nsbhaso.org\)](https://www.nsbhaso.org)
- 3. Revisions to the Agenda** – Chair
- 4. Approval of the August 8th, 2024, Minutes, Motion #24-38** – Chair.... Attachment
- 5. Comments & Announcements from the Chair** - Chair
- 6. Reports from Members** - Chair
- 7. Comments from the Public** - Chair
- 8. Report from the Advisory Board** (Available at Meeting) Attachment
Kara Allen, Advisory Board Chair
- 9. Report from the Finance Officer** (Available at Meeting) Attachment
Margaret Rojas, Assistant Director
- 10. Report from the Governance Operations Committee** - Chair

All matters listed with the Consent Agenda have been distributed to each Member for reading and study, are considered to be routine, and will be enacted by one action of the Board of Directors with no separate discussion. If separate discussion is desired, the item may be removed from the Consent Agenda and placed on the Regular Agenda by request of a Member.

Consent Agenda - Chair (Available at Meeting)Attachment

Motion #24-39

- To review and approve the North Sound Behavioral Health Administrative Services Organization claims paid from August 1st, through August 31st, 2024, in the amount of \$.
- Payroll for the month of August in the amount of \$ and associated employer benefits in the amount of \$.

11. Action Items – Margaret Rojas, Assistant Director

For Board Approval

Proviso 86-Behavioral Health Housing and Services

- An additional \$738,833.00 was allocated in the ASO July HCA amendment. This doubles our annual allotment for Proviso 86 funds. These funds are intended for rental assistance and/or behavioral health services for individuals involved with the criminal justice system. Effective date of funding availability is July 1, 2024.
- The following motion is the downstream contracts allocating the additional Proviso 86 behavioral health rental assistance and services in four counties, San Juan County is served by Compass Health with HARPS rental assistance funds.
 - Bridgeways Proviso 86 rental assistance and services in Snohomish County.
 - July addition of Proviso 86 funds \$45,000.00
 - Total Proviso 86 12-month allocation \$206,000.00.
 - Compass Health Proviso 86 rental assistance/services Snohomish County.
 - July addition of Proviso 86 funds \$45,000.00
 - Total Proviso 86 12-month allocation \$195,000.00.
 - Lifeline Connections Proviso 86 rental assistance and services in Skagit and Whatcom County.
 - July addition of Proviso 86 funds \$45,000.00
 - Total Proviso 86 12-month allocation \$227,935.00.
 - Lake Whatcom Center Proviso 86 rental assistance and services in Whatcom County.
 - July addition of Proviso 86 funds \$120,000.00
 - Total Proviso 86 12-month allocation \$270,000.00.
 - Opportunity Council rental assistance and services in Whatcom County.
 - July addition of proviso 86 funds \$120,000.00
 - Total Proviso 86 12-month allocation \$276,000.00
 - Pioneer Human Services Proviso 86 rental assistance and services in Island County.
 - July addition of Proviso 86 funds \$120,000.00
 - Total Proviso 86 12-month allocation \$302,935.00.

Motion #24-40

NS BH-ASO-Bridgeways-CBRA-23 Amendment 3 for the provision of additional Proviso 86 funds for rental assistance and services in Snohomish County. The contract term is July 1, 2023, through June 30, 2025, with an automatic one-year renewal on July 1, 2025, based on continued compliance with the terms of the contract.

NS BH-ASO-Compass Health-CBRA-23 Amendment 3 for the provision of additional Proviso 86 funds for rental assistance and services in Snohomish County. The contract term is July 1, 2023, through June 30, 2025, with an automatic one-year renewal on July 1, 2025, based on continued compliance with the terms of the contract.

NS BH-ASO-Lifeline Connections-FBG-23 Amendment 5 for the provision of additional Proviso 86 funds for rental assistance and services in Skagit and Whatcom County. The contract term is July 1, 2023, through June 30, 2025, with an automatic one-year renewal on July 1, 2025, based on continued compliance with the terms of the contract.

NS BH-ASO-Lake Whatcom Center-CBRA-23 Amendment 3 for the provision of additional proviso 86 funds for rental assistance and services in Whatcom County. The contract term is July 1, 2023, through June 30, 2025, with an automatic one-year renewal on July 1, 2025, based on continued compliance with the terms of the contract.

NS BH-ASO-Opportunity Council-CBRA-23 Amendment 3 for the provision of additional Proviso 86 funds for rental assistance and services in Whatcom County. The contract term is July 1, 2024, through June 30, 2025, with an automatic one-year renewal on July 1, 2025, based on continued compliance with the terms of the contract.

NS BH-ASO-Pioneer Human Services-CBRA-23 Amendment 3 for the provision of additional Proviso 86 funds for rental assistance and services in Island County. The contract term is July 1, 2024, through June 30, 2025, with an automatic one-year renewal on July 1, 2025, based on continued compliance with the terms of the contract.

ARPA Federal Block Grant

- The Health Resources and Services Administration (HRSA) Federal Grant award will expire on September 30, 2024.
 - The program has expanded services in Skagit & Island Counties.
 - Expansion of Medication Assisted Treatment (MAT) in Concrete and Oak Harbor
 - Lifeline Connections \$60,000.00 for MAT services
 - Expansion of our Opioid Outreach teams in east Skagit County
 - Mount Baker Presbyterian Church \$235,000.00 for Opioid Outreach
 - Supporting a prevention specialist in the Coupeville School District
 - NW ESD 189 \$25,000.00 for School Prevention
 - Funding a Co-Responder with Skagit Sheriff's Office
 - Skagit County Public Health \$150,907.00 for Co-Responder Services
 - San Juan County Recovery Café Peer Support
 - Lopez Island Family Resource Center-Heart & Soul Café \$28,260.00
 - Juvenile Treatment Services

- Snohomish County Superior Court \$51,000.00 for expansion of services for juveniles and families referred to Snohomish County probation.

Motion #24-41

NS BH-ASO-Lopez Island Heart and Soul-PSC-23 Amendment 1 to provide additional funding for the Recovery Café on Lopez Island. The term of this agreement is November 1, 2023, with a new expiration date of June 30, 2025, based on continued compliance with the terms of the contract.

NS BH-ASO-Lifeline Connections-ICN-23 Amendment 5 to provide the funding for MAT services under this contract. The contract term is January 1, 2023, through December 31, 2025, with an automatic one-year renewal on January 1, 2026, based on continued compliance with the terms of the contract.

NS BH-ASO-Mount Baker Presbyterian Church-ICN-23 Amendment 1 to provide funding for Opioid Outreach services under this contract. The contract term is September 1, 2023, through August 31, 2025, with an automatic one-year renewal on September 1, 2025, based on continued compliance with the terms of the contract.

NS BH-ASO-Skagit County-Interlocal-23 Amendment 5 to provide the funding for Co-Responder services under this contract. The contract term is January 1, 2023, through December 31, 2025, with an automatic one-year renewal on January 1, 2026, based on continued compliance with the terms of the contract.

NS BH-ASO-NW ESD 189-PSC-23 Amendment 1 for the purpose of providing a prevention specialist in the Coupeville School District. The contract term is September 1, 2023, through August 31, 2024, based on continued compliance with the terms of the contract.

NS BH-ASO-Snohomish County Superior Court-ICN-23 Amendment 4 to provide additional funding to continue services under this contract. The contract term is January 1, 2023, through December 31, 2025, with an automatic one-year renewal on January 1, 2026, based on continued compliance with the terms of the contract.

Program for Assertive Community Treatment (PACT)

- Compass Health has two (2) PACT teams, in Skagit & Whatcom counties serving up to 150 individuals. The need continues to expand for these services. Compass Health is requesting seven (7) additional rotating slots, currently they have (8) eight slots. The slots are reserved for individuals moving on and off Medicaid due to reoccurring spend downs. The cost of the additional PACT slots is up to \$358,548.96 annually, for a total of \$768,319.20 annually for 15 rotating slots.

Motion #24-42

NS BH-ASO-Compass Health-ICCN-23 Amendment 5 to provide funding to add additional PACT service funds under this contract. The contract term is January 1, 2023, through December 31, 2025, with an automatic one-year renewal on January 1, 2026, based on continued compliance with the terms of the contract.

12. Introduction Items

Margaret Rojas, Assistant Director

Health Care Authority (HCA)

- Projects for Assistance in Transition from Homelessness (PATH). This is an outreach program targeting individuals with a serious mental illness who are unhoused in Snohomish County. The annual funding for this service is \$219,026.00. North Sound provides a mandatory match annually of \$73,000.00.
- Peer Pathfinder Homeless Outreach Programs. Funding is used to support outreach and engagement services for those who are, or who are risk of homelessness and have or are suspected to have an Opiate Use Disorder and/or stimulant use disorder in Whatcom County. The annual funding for these services is \$131,480.00.
- Additional ARPA Peer Pathfinder funds are included in the amount of \$71,020.00 annually to specifically work with individuals exiting correctional facilities who have a serious mental illness or co-occurring conditions in Whatcom County.

Motion #

HCA-North Sound BH-ASO-PATH-24 for the purpose of funding PATH services in Snohomish County. The contract term is October 1, 2024, through September 30, 2025.

Motion #

HCA-North Sound BH-ASO-Peer Path Finder-24 for the purpose of providing peer pathfinder services in Whatcom County. The term of the contract is October 1, 2024, through September 30, 2025.

- The following two contracts are the downstream contracts for PATH and Peer Pathfinder services.

Bridgeways

- Bridgeways is the provider of PATH services in Snohomish County. The annual funding amount is \$219,026.00 of grant funding and \$73,000.00 in matching State funds for case management services for a total of \$292,026.00

Motion #

North Sound BH-ASO-Bridgeways-PATH-24 for the purpose of providing PATH outreach and case management services in Snohomish County. The term of this agreement is October 1, 2024, through September 30, 2025, based on continued compliance with the terms of the contract.

Lifeline Connections

- Lifeline Connections is the provider of Peer Pathfinder Services in Whatcom County. The total annual funding for this service is \$202,500.00

Motion #

NS BH-ASO-Lifeline Connections-FBG-23 Amendment 4 to provide funding to the Peer Path Finder services under this contract. The contract term is January 1, 2023, through December 31, 2024, with an automatic one-year renewal on January 1, 2025, based on continued compliance with the terms of the contract

13. Discussion Items

Margaret Rojas, Assistant Director

- The ASO Compensation Study has been added to the October Agenda for discussion with the full board

14. DRAFT Report from the Executive Director Attachment

Margaret Rojas, Assistant Director

15. Adjourn - Chair

Next Meeting: October 10th, 2024

North Sound Behavioral Health
Administrative Services Organization
Board of Directors
Meeting Minutes

August 8th, 2024

**Board of Directors Members Present
in Person:**

- **Peter Browning**, Commissioner, Skagit County
- **Cammy Hart-Anderson**, Human Services, Designated Alternate for Dave Somers, County Executive; Snohomish County

Members Present via MS Teams:

- **Cindy Wolf** (chairing meeting in Barry Buchanan's absence) Council Member; San Juan County
- **Lynda Austin**, Island County Human Services, Designated Alternate for Jill Johnson, Commissioner; Island County
- **Cynthia Foley**, Sr. Legislative Analyst, Designated Alternate for Strom Peterson, County Council; Snohomish County
- **Nicole Gorle**, Legislative Analyst, Designated Alternate for Nate Nehring, County Council; Snohomish County
- **Jami Mitchell**, Human Services Manager, Designated Alternate for Cindy Wolf, County Council; San Juan County
- **George Kosovich**, Skagit County Public Health, Designated Alternate for Peter Browning, Commissioner, Skagit County
- **Malora Christensen**, Response System Division Manager, Designated Alternate for Satpal Sidhu, County Executive; Whatcom County

**North Sound Behavioral Health
Administrative Services Organization
(North Sound BH-ASO) Staff Present:**

- **JanRose Ottaway Martin**, Executive Director
- **Kim Nakatani**, Accountant
- **Michael McAuley**, Clinical Director
- **Margaret Rojas**, Assistant Director
- **Maria Arreola**, Sr. Administrative Assistant
- **Joanie Wenzl**, Administrative Manager, Clerk of the Board

Guests Present:

None

Call to Order and Introductions – Chair

Cindy Wolf, Vice-Chair, called the meeting to order and initiated introductions. She was chairing in Barry Buchanan’s absence

Tribal Acknowledgement – Chair

[Tribal Behavioral Health | North Sound BH-ASO \(nsbhaso.org\)](http://nsbhaso.org)

The Chair read the Tribal Acknowledgement

Revisions to the Agenda – Chair

No revisions to the agenda were requested.

Approval of the June 13th, 2024, Minutes, Motion #24-34 – Chair

Cindy Wolf pointed out that her name was missed on the June Meeting minutes. The Clerk of the Board will add her, as she was in attendance during the Board Retreat/Work Session. Peter Browning moved the motion for approval *as amended*, Cindy Wolf seconded, all in favor, motion #24-34 carried.

Comments & Announcements from the Chair – Chair

Cindy noted that she is sitting in for Barry today and chairing the meeting in his absence.

Reports from Members – Chair

Board members gave updates on the behavioral health happenings in their respective counties.

Comments from the Public – Chair

There were no public in attendance, so there were no comments.

Kids Mental Health Mini-Presentation/Youth Navigator Program

Michael McAuley, Clinical Director

JanRose Ottaway Martin and Michael McAuley gave a brief overview of the Youth Navigator Program.

A PowerPoint presentation was given. Questions and answers followed.

Report from the Advisory Board

Kara Allen, Advisory Board Chair

JanRose gave the Advisory Board's Brief in Kara's absence.

Report from the Finance Officer

Margaret Rojas, Assistant Director

Margaret Rojas gave the Report from the Finance Officer. There were no questions.

Report from the Governance Operations Committee – Chair

Cindy gave the report the from the Governance and Operations Committee. She said the Compensation Study for NS BH-ASO was reviewed and discussed. She added that it will be presented during an upcoming board meeting.

All matters listed with the Consent Agenda have been distributed to each Member for reading and study, are considered to be routine, and will be enacted by one action of the Board of Directors with no separate discussion. If separate discussion is desired, the item may be removed from the Consent Agenda and placed on the Regular Agenda by request of a Member.

Consent Agenda - Chair

Note, there was no meeting for the month of July, so there are 2 months of warrants, payroll, and associated benefits listed below.

Motion #24-35

- To review and approve the North Sound Behavioral Health Administrative Services Organization claims paid from **June 1st**, 2024, through **June 30th**, 2024, in the amount of \$3,604,033.34.
- Payroll for the month of June in the amount of \$197,545.07 and associated employer benefits in the amount of \$98,557.34.
- To review and approve the North Sound Behavioral Health Administrative Services Organization claims paid from **July 1st**, 2024, through **July 31st**, 2024, in the amount of \$4,676,005.77.
- Payroll for the month of July in the amount of \$199,373.95 and associated employer benefits in the amount of \$97,802.39.

Peter Browning moved the motion for approval, Cammy Hart-Anderson seconded, all in favor, none opposed, motion #24-35 carried

Introduction Items – Margaret Rojas, Assistant Director

Proviso 86-Behavioral Health Housing and Services

- An additional \$738,833.00 was allocated in the ASO July HCA amendment. This doubles our annual allotment for Proviso 86 funds. These funds are intended for rental assistance and/or behavioral health services for individuals involved with the criminal justice system. Effective date of funding availability is July 1, 2024.
- The following motion is the downstream contracts allocating the additional Proviso 86 behavioral health rental assistance and services in four counties, San Juan County is served by Compass Health with HARPS rental assistance funds.
 - Bridgeways Proviso 86 rental assistance and services in Snohomish County.
 - July addition of Proviso 86 funds \$45,000.00
 - Total Proviso 86 12-month allocation \$206,000.00.
 - Compass Health Proviso 86 rental assistance/services Snohomish County.
 - July addition of Proviso 86 funds \$45,000.00
 - Total Proviso 86 12-month allocation \$195,000.00.
 - Lifeline Connections Proviso 86 rental assistance and services in Skagit and Whatcom County.
 - July addition of Proviso 86 funds \$45,000.00
 - Total Proviso 86 12-month allocation \$227,935.00.
 - Lake Whatcom Center Proviso 86 rental assistance and services in Whatcom County.
 - July addition of Proviso 86 funds \$120,000.00
 - Total Proviso 86 12-month allocation \$270,000.00.
 - Opportunity Council rental assistance and services in Whatcom County.
 - July addition of proviso 86 funds \$120,000.00
 - Total Proviso 86 12-month allocation \$276,000.00
 - Pioneer Human Services Proviso 86 rental assistance and services in Island County.
 - July addition of Proviso 86 funds \$120,000.00
 - Total Proviso 86 12-month allocation \$302,935.00.

Motion #24-xx

NS BH-ASO-Bridgeways-CBRA-23 Amendment 3 for the provision of additional Proviso 86 funds for rental assistance and services in Snohomish County. The contract term is July 1, 2023, through June 30, 2025, with an automatic one-year renewal on July 1, 2025, based on continued compliance with the terms of the contract.

NS BH-ASO-Compass Health-CBRA-23 Amendment 3 for the provision of additional Proviso 86 funds for rental assistance and services in Snohomish County. The contract term is July 1, 2023, through June 30, 2025, with an automatic one-year renewal on July 1, 2025, based on continued compliance with the terms of the contract.

NS BH-ASO-Lifeline Connections-FBG-23 Amendment 5 for the provision of additional Proviso 86 funds for rental assistance and services in Skagit and Whatcom County. The contract term is July 1, 2023, through June 30, 2025, with an automatic one-year renewal on July 1, 2025, based on continued compliance with the terms of the contract.

NS BH-ASO-Lake Whatcom Center-CBRA-23 Amendment 3 for the provision of additional proviso 86 funds for rental assistance and services in Whatcom County. The contract term is July 1, 2023, through June 30, 2025, with an automatic one-year renewal on July 1, 2025, based on continued compliance with the terms of the contract.

through June 30, 2025, with an automatic one-year renewal on July 1, 2025, based on continued compliance with the terms of the contract.

NS BH-ASO-Opportunity Council-CBRA-23 Amendment 3 for the provision of additional Proviso 86 funds for rental assistance and services in Whatcom County. The contract term is July 1, 2024, through June 30, 2025, with an automatic one-year renewal on July 1, 2025, based on continued compliance with the terms of the contract.

NS BH-ASO-Pioneer Human Services-CBRA-23 Amendment 3 for the provision of additional Proviso 86 funds for rental assistance and services in Island County. The contract term is July 1, 2024, through June 30, 2025, with an automatic one-year renewal on July 1, 2025, based on continued compliance with the terms of the contract.

ARPA Federal Block Grant

- The Health Resources and Services Administration (HRSA) Federal Grant award will expire on September 30, 2024.
 - The program has expanded services in Skagit & Island Counties.
 - Expansion of Medication Assisted Treatment (MAT) in Concrete and Oak Harbor
 - Lifeline Connections \$60,000.00 for MAT services
 - Expansion of our Opioid Outreach teams in east Skagit County
 - Mount Baker Presbyterian Church \$235,000.00 for Opioid Outreach
 - Supporting a prevention specialist in the Coupeville School District
 - NW ESD 189 \$25,000.00 for School Prevention
 - Funding a Co-Responder with Skagit Sheriff's Office
 - Skagit County Public Health \$150,907.00 for Co-Responder Services
- San Juan County Recovery Café Peer Support
 - Lopez Island Family Resource Center-Heart & Soul Café \$28,260.00
- Juvenile Treatment Services
 - Snohomish County Superior Court \$51,000.00 for expansion of services for juveniles and families referred to Snohomish County probation.

Motion 24-xx

NS BH-ASO-Lopez Island Heart and Soul-PSC-23 Amendment 1 to provide additional funding for the Recovery Café on Lopez Island. The term of this agreement is November 1, 2023, with a new expiration date of June 30, 2025, based on continued compliance with the terms of the contract.

NS BH-ASO-Lifeline Connections-ICN-23 Amendment 5 to provide the funding for MAT services under this contract. The contract term is January 1, 2023, through December 31, 2025, with an automatic one-year renewal on January 1, 2026, based on continued compliance with the terms of the contract.

NS BH-ASO-Mount Baker Presbyterian Church-ICN-23 Amendment 1 to provide funding for Opioid Outreach services under this contract. The contract term is September 1, 2023, through August 31, 2025, with an automatic one-year renewal on September 1, 2025, based on continued compliance with the terms of the contract.

NS BH-ASO-Skagit County-Interlocal-23 Amendment 5 to provide the funding for Co-Responder services under this contract. The contract term is January 1, 2023, through December 31, 2025, with an automatic one-year renewal on January 1, 2026, based on continued compliance with the terms of the contract.

NS BH-ASO-NW ESD 189-PSC-23 Amendment 1 for the purpose of providing a prevention specialist in the Coupeville School District. The contract term is September 1, 2023, through August 31, 2024, based on continued compliance with the terms of the contract.

NS BH-ASO-Snohomish County Superior Court-ICN-23 Amendment 4 to provide additional funding to continue services under this contract. The contract term is January 1, 2023, through December 31, 2025, with an automatic one-year renewal on January 1, 2026, based on continued compliance with the terms of the contract.

Program for Assertive Community Treatment (PACT)

Compass Health has two (2) PACT teams, in Skagit & Whatcom counties serving up to 150 individuals. The need continues to expand for these services. Compass Health is requesting seven (7) additional rotating slots. The slots are reserved for individuals moving on and off Medicaid due to reoccurring spend downs.

Motion 24-xx

NS BH-ASO-Compass Health-ICCN-23 Amendment 5 to provide funding to add additional PACT service funds under this contract. The contract term is January 1, 2023, through December 31, 2025, with an automatic one-year renewal on January 1, 2026, based on continued compliance with the terms of the contract.

Margaret Rojas spoke to the Introductions items listed above. There were no questions.

Evergreen Recovery Centers (placeholder)

Evergreen Recovery Centers is requesting funds to increase nursing staff at the withdrawal management facility in Everett. The funding request is for four (4) FTE nurses for a total annual ask is up to \$724,880.00.

Discussion ensued on the placeholder item above.

Peter Browning moved a motion for *up to* \$300K to be granted to Evergreen Recovery Centers (to be administered at the discretion of the NS BHASO Leadership, while working with Evergreen Recovery Centers regarding responsible stewardship of public funds).

Malora Christensen seconded, all in favor, motion carried. **Motion #24-36**

Lake Whatcom Center (placeholder)

Lake Whatcom Center is requesting funds for startup costs (staffing) for their Maplewood 16-bed Enhanced Service Facility for individuals transitioning out of hospital/institutional settings. The total ask is up to \$775,570.00.

JanRose led a discussion on the placeholder item listed above.

There was conversation around this item being an “ask” of the Legislative Session.

Cammy Hart-Anderson moved that the BOD authorize Lake Whatcom \$300K at the discretion of the NS B-ASO Leadership, contingent upon determination of timely need, Peter Browning seconded the motion.

Cindy Wolf voted nay, as she believes there should be conversation with our legislators first. All others were in favor, motion carried by majority vote. **Motion #24-37**

Discussion Items

JanRose Ottaway Martin, Executive Director

- NS BH-ASO Org Chart

JanRose referenced the NS BH-ASO Organizational Chart. She asked Board Members to reach out to her if there are any questions.

- Board Retreat/Work Session Follow-up

The ASO is working on recommendations for actions in the upcoming years. The ASO is also working with the Advisory Board and County Coordinators regarding the recommendations.

This will be brought back to the BOD for further consideration. The goal is to begin the roll out the Strategic Plan January 2025.

- County Capital Requests and Large Agency Requests

Discussion took place on the topic above. One suggestion was that the Crisis System be assessed as well as the dollars available that can be set aside for capital. This will be brought back to the board meeting for further discussion.

Report from the Executive Director

JanRose Ottaway Martin, Executive Director

JanRose gave the report from the Executive Director and covered the following topics:

- Weekly Crisis Metrics Report
- Recent work in the Board of Directors, Advisory Board Retreat, kicking off Strategic Planning Process
- Proviso Programs
- Youth Navigator Program (aka Kids’ Mental Health)
- Hiring two new positions
- HB 1515, Community Presentation at the North Sound Provider’s meeting on August 1, 2024
- 2024 State of Mental Health in America report

Adjourn – 3:02 p.m.

Next Meeting: September 12th, 2024

DRAFT

1. Legislative Summit

Developing priorities and soliciting county specific issues. Areas identified so far-

- Enshrining the Proviso Flexibility in legislation, broader to all ASOs
- County specific and collective issues
- Advisory Board priorities

2. HCA informed us of a couple program enhancements, which require ASO leadership.

The two areas identified are a Regional Learning Collaborative and 988 Coordination with multiple stakeholders. ASOs collectively agreed to take on these roles with the caveat HCA fund two FTEs per ASO. One FTE would be leading the Learning Collaborative and one leading the regional 988 coordination. There is still some unknown of the particulars HCA and ASOs envision, but we are pleased HCA is reaching out to the ASOs to take on these roles. There will be additional funds needed for the training hub, which we are currently in the process of assessing and providing the feedback to HCA.

3. The ASO lobbyist Brad Banks will be the WASAC lobbyist going forward. Julianna has left and taken on another position. Brad feels it's a good fit working with the counties and ASOs on common behavioral health issues, such as the re-procurement of the MCO contracts and network adequacy, to include access to services.

4. Update on Evergreen Recovery Centers & Lake Whatcom Center. We reached out to both providers to ask for an updated proposal identifying priorities for up to \$300K. Both providers were thankful for the funding.

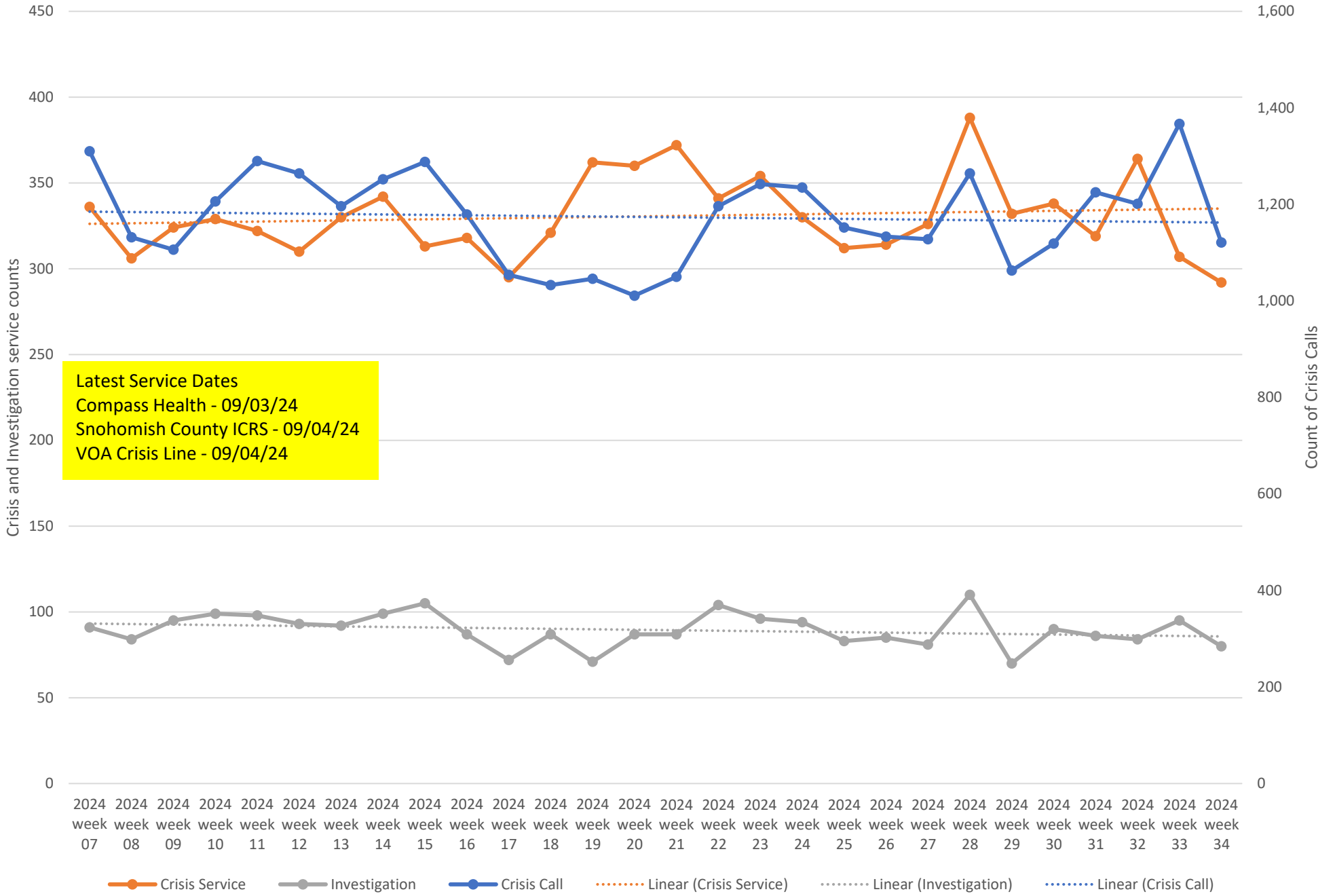
5. Recovery International (RI) is weighing the feasibility to operate the Lynwood facility. They have identified funding shortfalls for the first two years of operation, 4.9M and 5.9M respectively. This facility is a crisis stabilization center meant to be a diversion from jail and 16 recliners for 23-hour stabilization and 16 short term (longer than 23 hours) psychiatric beds. RI will be reaching out to local legislative representatives and funders to determine if they can fill the gaps in funding. We received funding for capital and short-term operations in total of \$2M, which RI has been billing, however, there was no specific ask of the North Sound ASO on the funding shortfall.



Weekly Crisis Capacity Indicator Snapshot

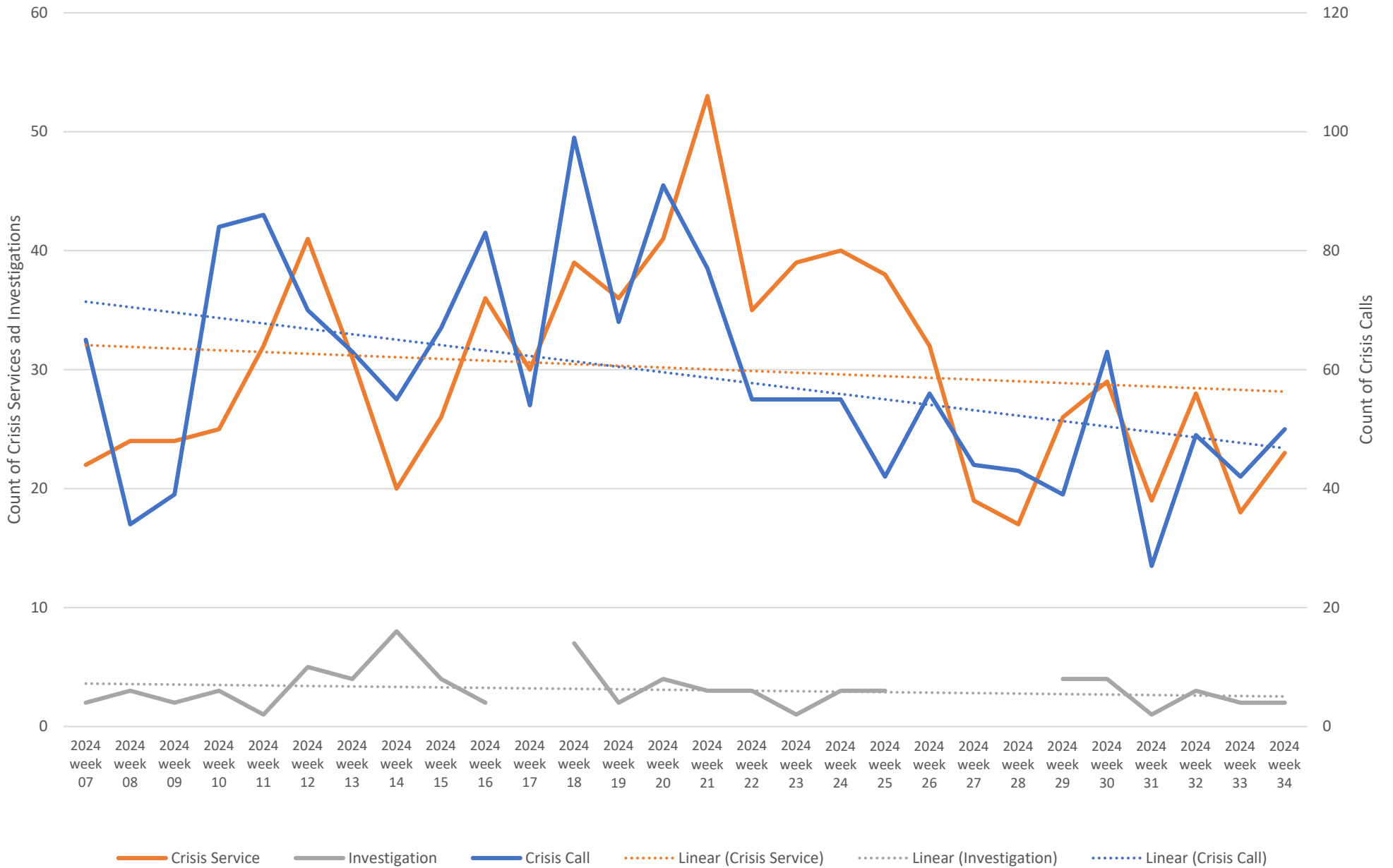
| | |
|---------|--|
| Page 2 | Crisis Data - dates 02/11/24 to 08/24/24 |
| Page 3 | Crisis Data: Ages 0-17 - dates 02/11/24 to 08/24/24 |
| Page 4 | All DCR Dispatches - dates 02/11/24 to 08/24/24 |
| Page 5 | Weekly Staff Count - Staff providing Crisis or Investigation services 02/11/24 to 08/24/24 |
| Page 6 | Hospital placement locations (Invol and Vol) - No adjustment has been made for timely data - recent weeks likely low |
| Page 7 | Telehealth only, crisis and investigation services from 02/11/24 to 08/24/24 |
| Page 8 | Crisis Service Unit Percent - Crisis Service units divided by Crisis units + Investigation units |
| Page 9 | Washington State Indicators of Anxiety or Depression Based on Reported Frequency of Symptoms During Last 7 Days |
| Page 10 | Place of Service -Crisis Services, percent of total by week |
| Page 11 | Place of Service -Investigations, percent of total by week |
| Page 12 | North Sound BH ASO Walkaway Chart 02/11/24 to 08/24/24 |

Crisis Data - dates 02/11/24 to 08/24/24

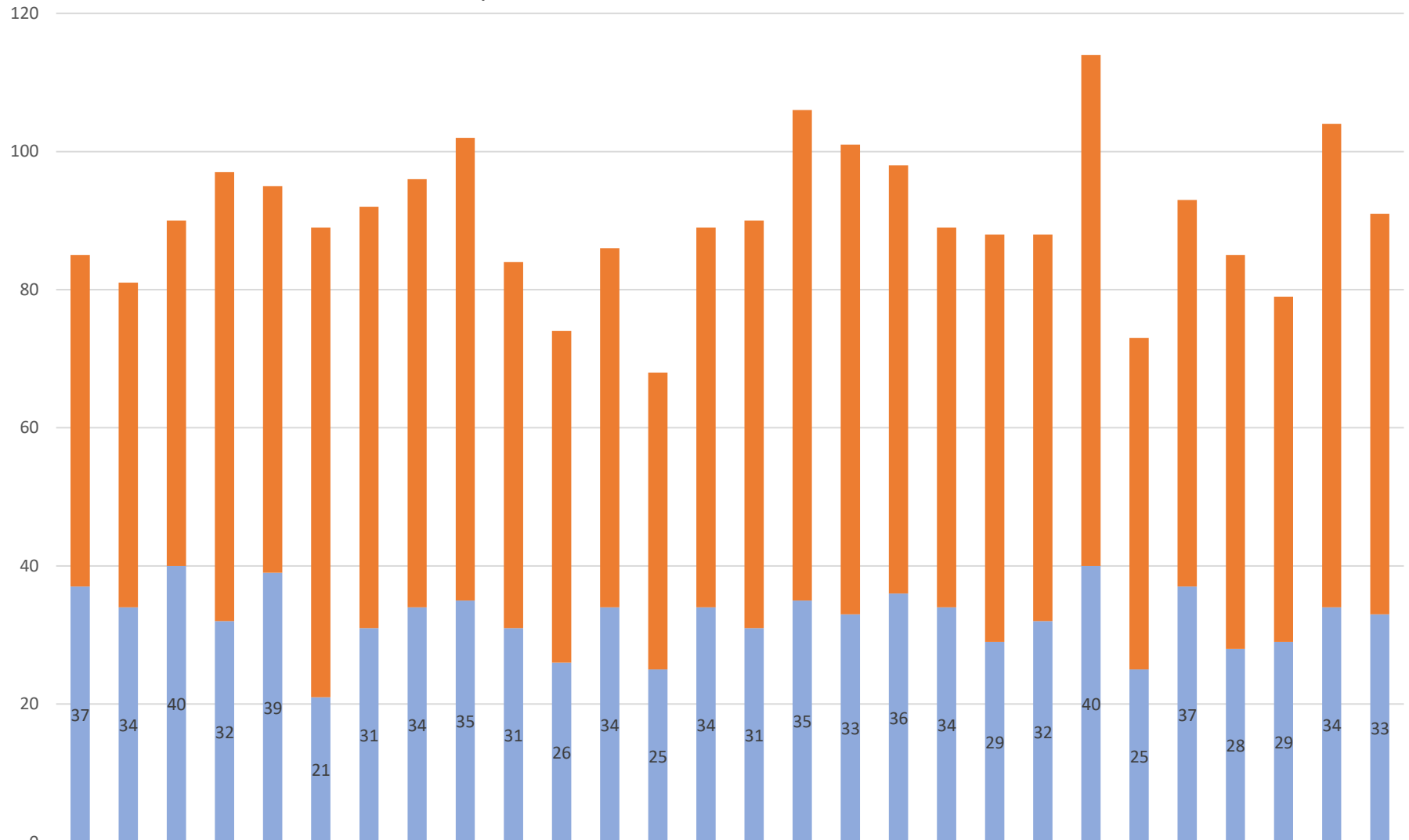


Latest Service Dates
 Compass Health - 09/03/24
 Snohomish County ICRS - 09/04/24
 VOA Crisis Line - 09/04/24

Crisis Data: Ages 0-17 - dates 02/11/24 to 08/24/24



All DCR Dispatches - dates 02/11/24 to 08/24/24



| | | | | | | | | | | | | | | | | | | | | | | | | | | | | |
|-------------------------------------|----|----|----|----|----|----|----|----|----|----|----|----|----|----|----|----|----|----|----|----|----|----|----|----|----|----|----|----|
| dispatch resulting in other outcome | 48 | 47 | 50 | 65 | 56 | 68 | 61 | 62 | 67 | 53 | 48 | 52 | 43 | 55 | 59 | 71 | 68 | 62 | 55 | 59 | 56 | 74 | 48 | 56 | 57 | 50 | 70 | 58 |
| dispatch resulting in detention | 37 | 34 | 40 | 32 | 39 | 21 | 31 | 34 | 35 | 31 | 26 | 34 | 25 | 34 | 31 | 35 | 33 | 36 | 34 | 29 | 32 | 40 | 25 | 37 | 28 | 29 | 34 | 33 |

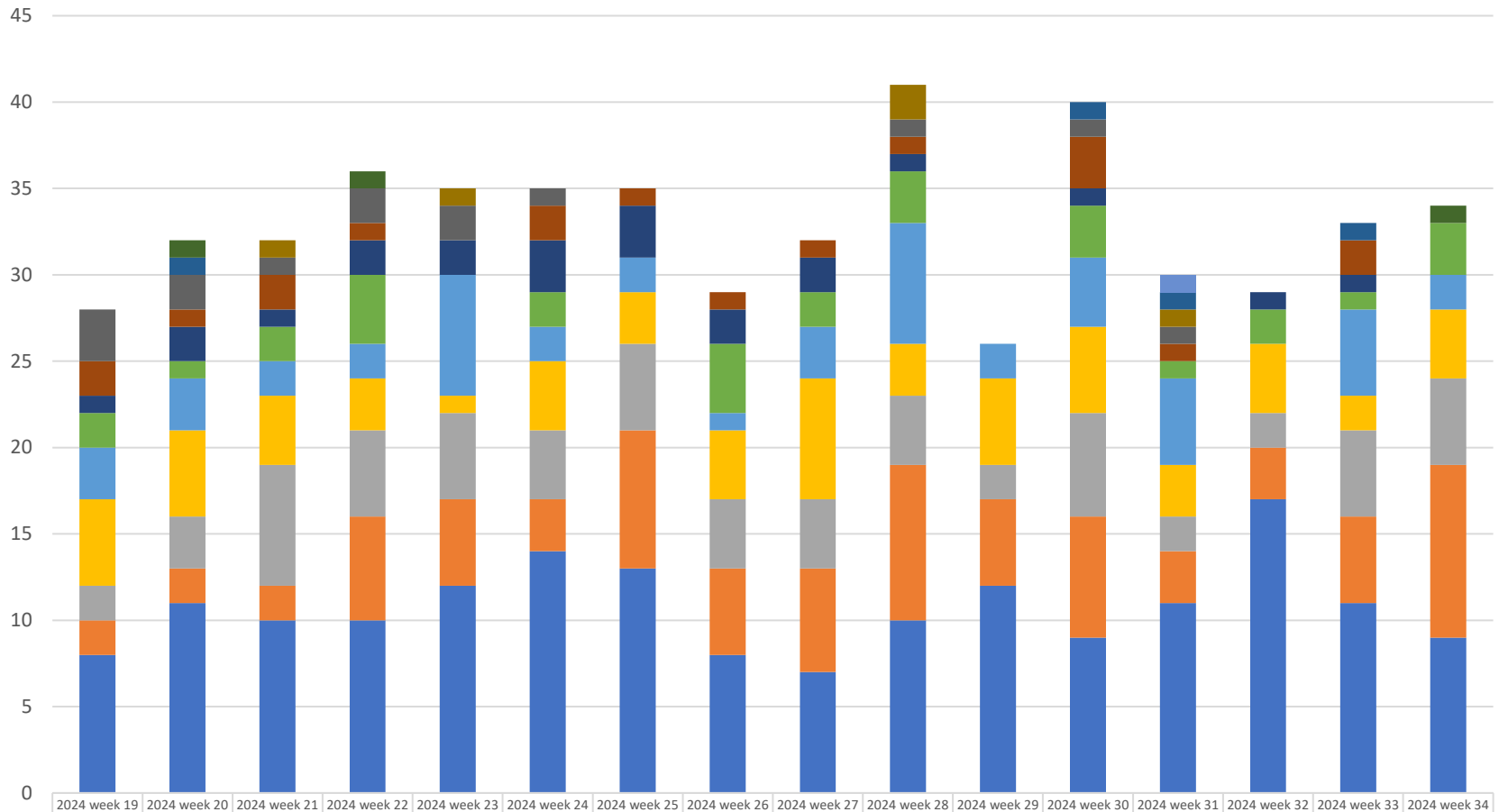
Weekly Staff Count - Staff providing Crisis or Investigation services 02/11/24 to 08/24/24



2024 week 34 ending 01/00/00

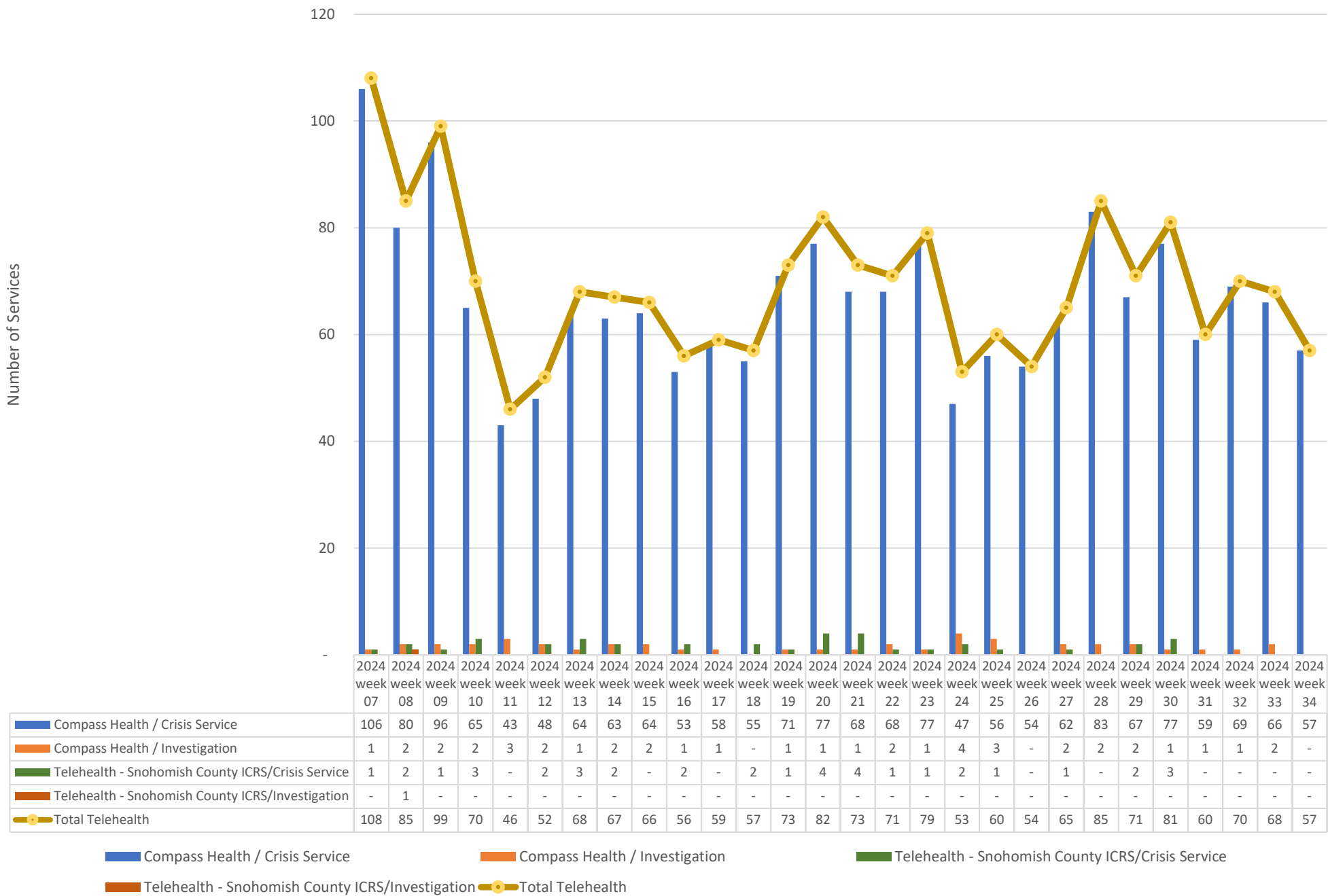
Hospital placement locations (Invol and Vol) - No adjustment has been made for timely data - recent weeks likely low

Count of hospital placement locations in the dispatch record

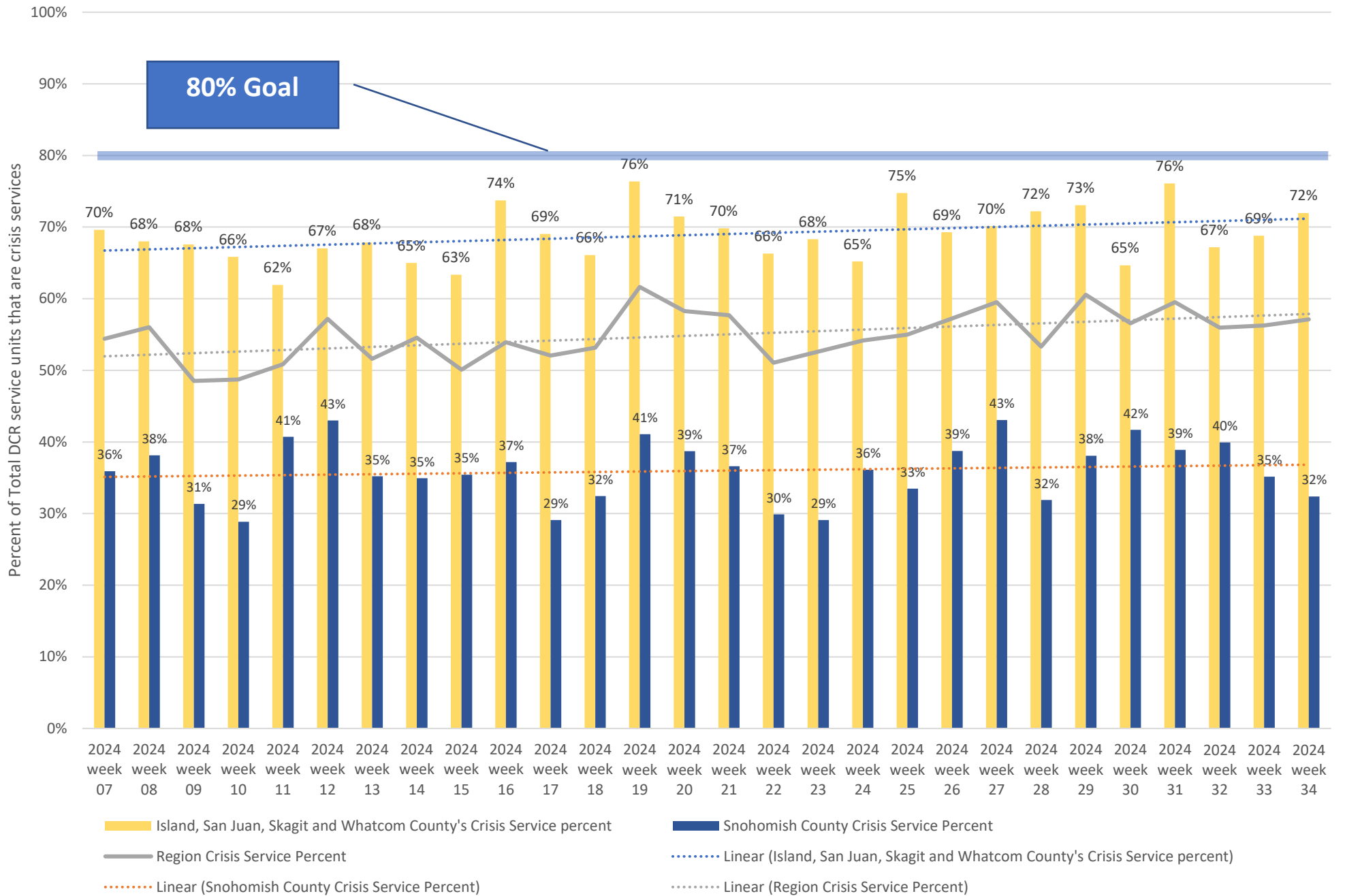


| | 2024 week 19 | 2024 week 20 | 2024 week 21 | 2024 week 22 | 2024 week 23 | 2024 week 24 | 2024 week 25 | 2024 week 26 | 2024 week 27 | 2024 week 28 | 2024 week 29 | 2024 week 30 | 2024 week 31 | 2024 week 32 | 2024 week 33 | 2024 week 34 |
|---|--------------|--------------|--------------|--------------|--------------|--------------|--------------|--------------|--------------|--------------|--------------|--------------|--------------|--------------|--------------|--------------|
| Western State | | | | | | | | | | | | | 1 | | | |
| THURSTON/MASON EandT FACILITY | | 1 | | 1 | | | | | | | | | | | | 1 |
| VALLEY GENERAL HOSPITAL | | 1 | | | | | | | | | | 1 | 1 | | 1 | |
| Swedish Mill Creek | | | 1 | | 1 | | | | | 2 | | | 1 | | | |
| ABHS Chehalis | 3 | 2 | 1 | 2 | 2 | 1 | | | | 1 | | 1 | 1 | | | |
| Telecare North Sound Evaluation and Treatment | 2 | 1 | 2 | 1 | | 2 | 1 | 1 | 1 | 1 | | 3 | 1 | | 2 | |
| BHC Fairfax Hospital INC | 1 | 2 | 1 | 2 | 2 | 3 | 3 | 2 | 2 | 1 | | 1 | | 1 | 1 | |
| Mukilteo | 2 | 1 | 2 | 4 | | 2 | | 4 | 2 | 3 | | 3 | 1 | 2 | 1 | 3 |
| SMOKEY POINT BEHAVIORAL HOSPITAL | 3 | 3 | 2 | 2 | 7 | 2 | 2 | 1 | 3 | 7 | 2 | 4 | 5 | | 5 | 2 |
| Skagit Valley Hospital | 5 | 5 | 4 | 3 | 1 | 4 | 3 | 4 | 7 | 3 | 5 | 5 | 3 | 4 | 2 | 4 |
| Peacehealth Bellingham | 2 | 3 | 7 | 5 | 5 | 4 | 5 | 4 | 4 | 4 | 2 | 6 | 2 | 2 | 5 | 5 |
| SWEDISH EDMONDS | 2 | 2 | 2 | 6 | 5 | 3 | 8 | 5 | 6 | 9 | 5 | 7 | 3 | 3 | 5 | 10 |
| Providence Everett | 8 | 11 | 10 | 10 | 12 | 14 | 13 | 8 | 7 | 10 | 12 | 9 | 11 | 17 | 11 | 9 |

Telehealth only, crisis and investigation services from 02/11/24 to 08/24/24



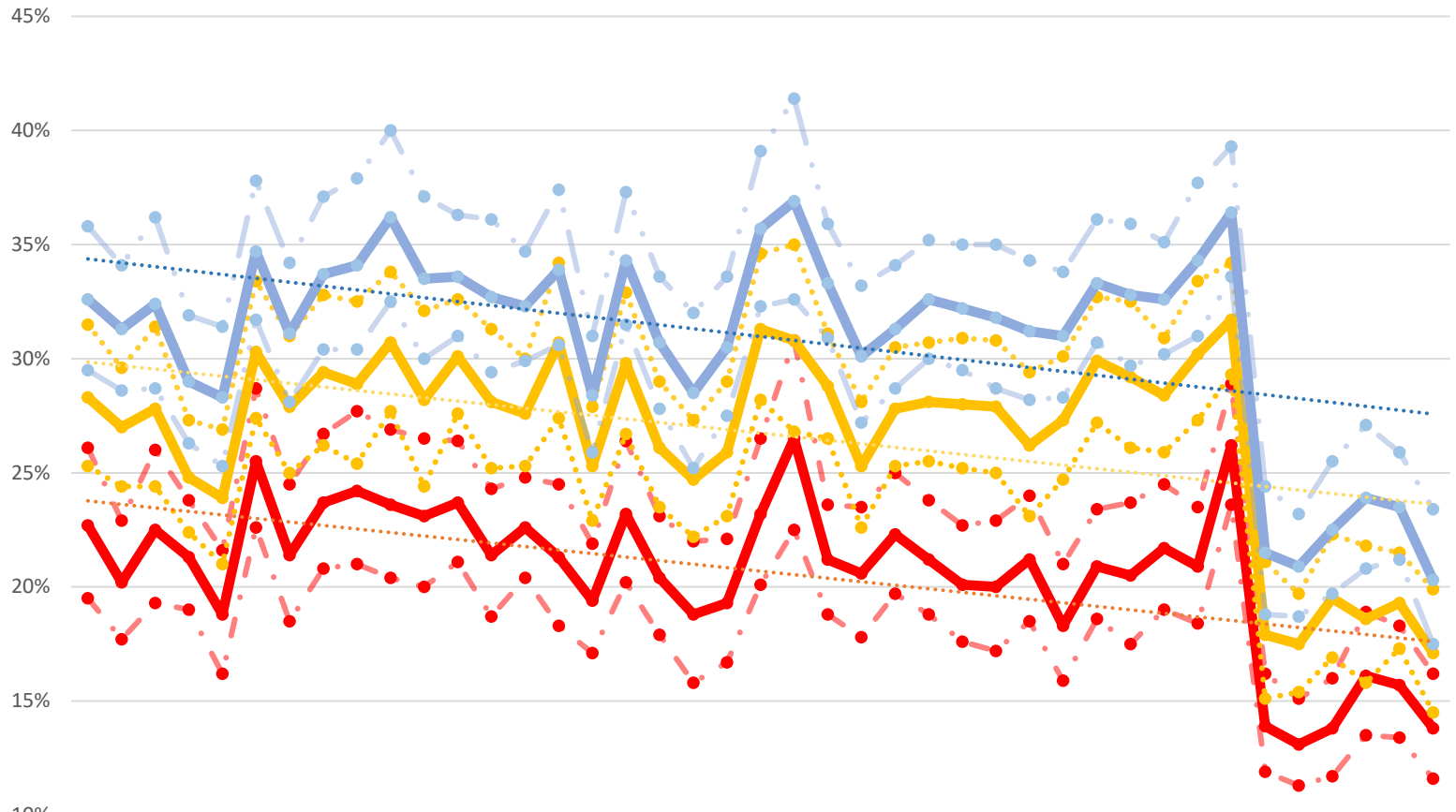
Crisis Service Unit Percent - Crisis Service units divided by Crisis units + Investigation units



Washington State Indicators of Anxiety or Depression Based on Reported Frequency of Symptoms During Last 7 Days

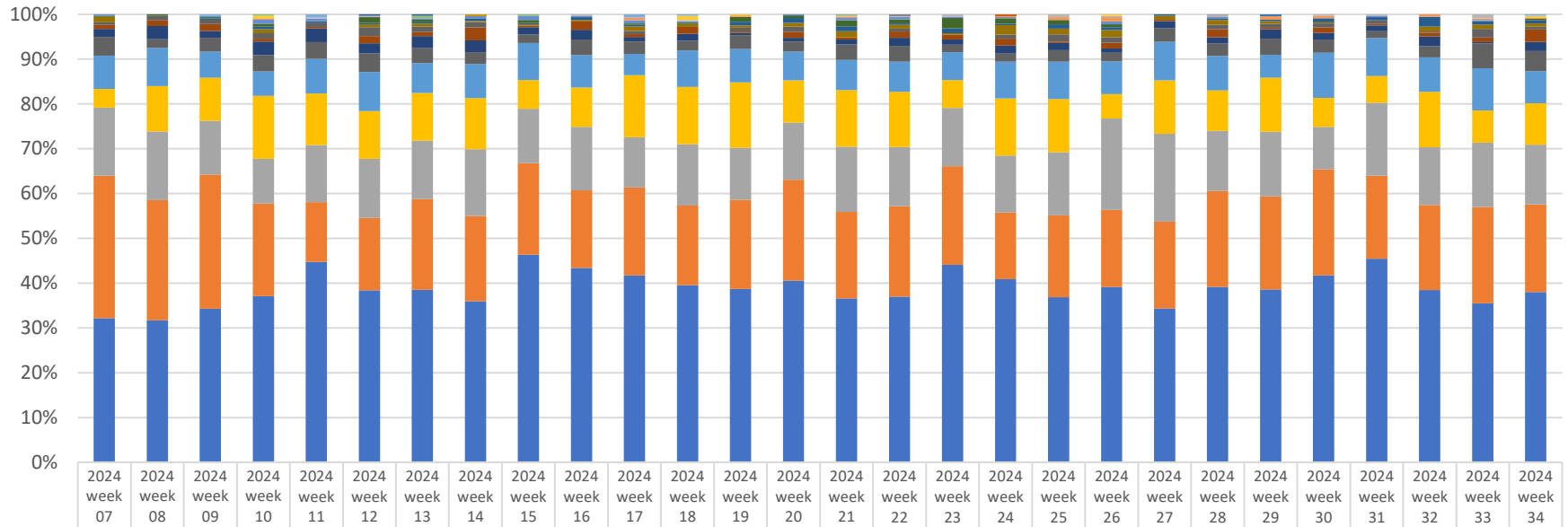
The U.S. Census Bureau, in collaboration with five federal agencies, launched the Household Pulse Survey to produce data on the social and economic impacts of Covid-19 on American households. The Household Pulse Survey was designed to gauge the impact of the pandemic on employment status, consumer spending, food security, housing, education disruptions, and dimensions of physical and mental wellness.

<https://data.cdc.gov/NCHS/Indicator-s-of-Anxiety-or-Depression-Based-on-Repor/8pt5-q6wq>



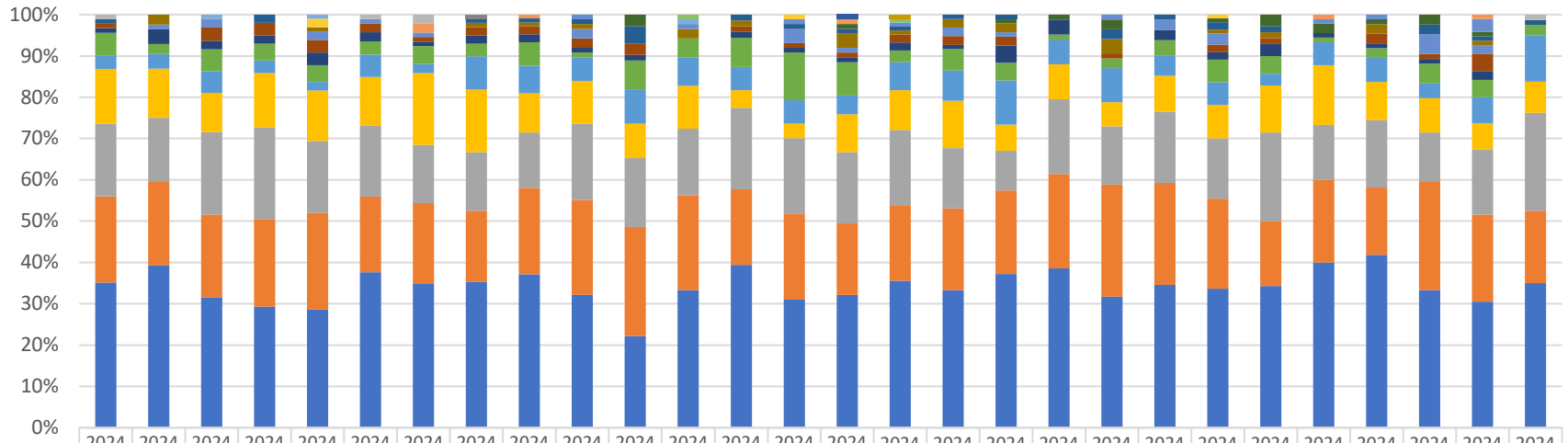
| | | | | | | | | | | | | | | | | | | | | | | | | | | | | | | | | | | | | | | | | | | | | | | | | | | | | | |
|---|------------|------------|------------|------------|------------|------------|------------|------------|------------|------------|------------|------------|------------|------------|------------|------------|------------|------------|------------|------------|------------|------------|------------|------------|------------|------------|------------|------------|------------|------------|------------|------------|------------|------------|------------|------------|------------|------------|------------|------------|------------|------------|------------|------------|------------|------------|------------|------------|-----|-----|-----|-----|-----|
| | 28 Apr '10 | 12 May '21 | 26 May '21 | 09 Jun '21 | 23 Jun '21 | 21 Jul '21 | 04 Aug '21 | 18 Aug '21 | 01 Sep '21 | 15 Sep '21 | 29 Sep '21 | 01 Oct '21 | 29 Oct '21 | 26 Nov '21 | 02 Dec '21 | 30 Dec '21 | 27 Jan '22 | 01 Feb '22 | 29 Feb '22 | 27 Mar '22 | 05 Apr '22 | 14 May '22 | 02 Jun '22 | 27 Jun '22 | 14 Jul '22 | 05 Aug '22 | 02 Sep '22 | 09 Oct '22 | 27 Nov '22 | 05 Dec '22 | 02 Jan '23 | 09 Feb '23 | 01 Mar '23 | 29 Apr '23 | 26 May '23 | 07 Jun '23 | 28 Jul '23 | 26 Aug '23 | 23 Sep '23 | 20 Oct '23 | 18 Nov '23 | 09 Dec '23 | 06 Jan '24 | 05 Feb '24 | 03 Mar '24 | 02 Apr '24 | 30 May '24 | 28 Jun '24 | | | | | |
| ● % with Symp. of Depr. Dsrdr low conf. | 20% | 18% | 19% | 19% | 16% | 23% | 19% | 21% | 21% | 20% | 20% | 21% | 19% | 20% | 18% | 17% | 20% | 18% | 16% | 17% | 20% | 23% | 19% | 18% | 16% | 17% | 20% | 23% | 19% | 18% | 20% | 21% | 21% | 22% | 23% | 24% | 25% | 24% | 23% | 24% | 25% | 26% | 27% | 28% | 29% | 29% | 26% | 14% | 13% | 14% | 16% | 16% | 14% |
| ● % with Symp. of Depr. Dsrdr value | 23% | 20% | 23% | 21% | 19% | 26% | 21% | 24% | 24% | 24% | 23% | 24% | 21% | 23% | 21% | 19% | 23% | 20% | 19% | 19% | 23% | 27% | 21% | 21% | 22% | 27% | 31% | 24% | 24% | 25% | 24% | 23% | 23% | 24% | 25% | 24% | 23% | 23% | 24% | 21% | 18% | 21% | 21% | 22% | 21% | 26% | 14% | 13% | 14% | 16% | 16% | 14% | |
| ● % with Symp. of Depr. Dsrdr high conf. | 26% | 23% | 26% | 24% | 22% | 29% | 25% | 27% | 28% | 27% | 27% | 26% | 24% | 25% | 25% | 22% | 26% | 23% | 22% | 22% | 27% | 31% | 24% | 24% | 25% | 24% | 23% | 23% | 24% | 21% | 20% | 20% | 21% | 19% | 16% | 17% | 17% | 19% | 18% | 17% | 19% | 18% | 17% | 19% | 16% | 15% | 16% | 16% | 19% | 18% | 16% | | |
| ● % with Symp. of Anxiety Dsrdr low conf. | 25% | 24% | 24% | 22% | 21% | 27% | 25% | 26% | 25% | 28% | 24% | 28% | 25% | 25% | 27% | 23% | 27% | 24% | 22% | 23% | 28% | 27% | 27% | 23% | 25% | 26% | 25% | 26% | 25% | 23% | 25% | 28% | 28% | 28% | 28% | 26% | 27% | 30% | 29% | 28% | 30% | 32% | 18% | 18% | 20% | 19% | 19% | 17% | 15% | | | | |
| ● % with Symp. of Anxiety Dsrdr value | 28% | 27% | 28% | 25% | 24% | 30% | 28% | 29% | 29% | 31% | 28% | 30% | 28% | 28% | 31% | 25% | 30% | 26% | 25% | 26% | 31% | 31% | 29% | 25% | 28% | 28% | 28% | 28% | 28% | 28% | 26% | 27% | 30% | 29% | 28% | 28% | 30% | 32% | 18% | 18% | 20% | 19% | 19% | 17% | 15% | | | | | | | | |
| ● % with Symp. of Anxiety Dsrdr high conf. | 32% | 30% | 31% | 27% | 27% | 33% | 31% | 33% | 33% | 34% | 32% | 33% | 31% | 30% | 34% | 28% | 33% | 29% | 27% | 29% | 35% | 31% | 29% | 25% | 28% | 32% | 33% | 31% | 28% | 29% | 31% | 31% | 31% | 29% | 30% | 33% | 33% | 31% | 33% | 34% | 21% | 20% | 22% | 22% | 22% | 20% | | | | | | | |
| ● % with Symp. of Anxiety or Depr. Dsrdr low conf. | 30% | 29% | 29% | 26% | 25% | 32% | 28% | 30% | 30% | 33% | 30% | 31% | 29% | 30% | 31% | 26% | 32% | 28% | 25% | 28% | 32% | 33% | 31% | 27% | 29% | 30% | 30% | 29% | 28% | 28% | 31% | 30% | 30% | 29% | 28% | 28% | 31% | 30% | 30% | 31% | 34% | 19% | 19% | 20% | 21% | 21% | 18% | | | | | | |
| ● % with Symp. of Anxiety or Depr. Dsrdr value | 33% | 31% | 32% | 29% | 28% | 35% | 31% | 34% | 34% | 36% | 34% | 34% | 33% | 32% | 34% | 28% | 34% | 34% | 31% | 29% | 31% | 36% | 37% | 33% | 30% | 31% | 33% | 32% | 32% | 31% | 31% | 33% | 33% | 33% | 34% | 36% | 22% | 21% | 23% | 24% | 24% | 20% | | | | | | | | | | | |
| ● % with Symp. of Anxiety or Depr. Dsrdr high conf. | 36% | 34% | 36% | 32% | 31% | 38% | 34% | 37% | 38% | 40% | 37% | 36% | 36% | 35% | 37% | 31% | 37% | 34% | 32% | 34% | 39% | 41% | 36% | 33% | 34% | 35% | 35% | 35% | 34% | 34% | 36% | 36% | 35% | 38% | 39% | 24% | 23% | 26% | 27% | 26% | 23% | | | | | | | | | | | | |

Place of Service -Crisis Services, percent of total by week



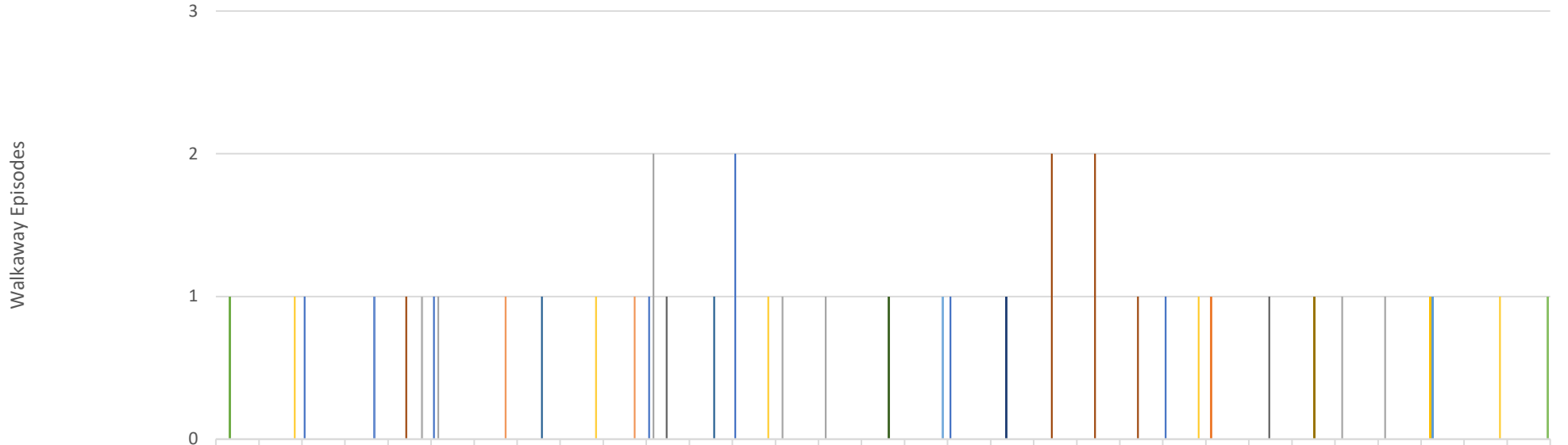
| | 2024 week 07 | 2024 week 08 | 2024 week 09 | 2024 week 10 | 2024 week 11 | 2024 week 12 | 2024 week 13 | 2024 week 14 | 2024 week 15 | 2024 week 16 | 2024 week 17 | 2024 week 18 | 2024 week 19 | 2024 week 20 | 2024 week 21 | 2024 week 22 | 2024 week 23 | 2024 week 24 | 2024 week 25 | 2024 week 26 | 2024 week 27 | 2024 week 28 | 2024 week 29 | 2024 week 30 | 2024 week 31 | 2024 week 32 | 2024 week 33 | 2024 week 34 | |
|--------------------------------|--------------|--------------|--------------|--------------|--------------|--------------|--------------|--------------|--------------|--------------|--------------|--------------|--------------|--------------|--------------|--------------|--------------|--------------|--------------|--------------|--------------|--------------|--------------|--------------|--------------|--------------|--------------|--------------|---|
| Public Health Clinic | | | | | | | | | | | | | | | | | | | | | | | 1 | | | | | | |
| Custodial Care Facility | | | | | | | | 1 | | | | | | | | | | | | | | | | | | | | | |
| Hospice | | | | | | | | | | | | | | | | 1 | | | | | | | | | | | | | |
| Urgent Care Facility | | | | | | | | | | | | | | | | | | | 1 | | | | | | | | | | |
| Community Mental Health Center | | | | | | 1 | 1 | | | | | | | | | | | | | | | | | | | | | | |
| Skilled Nursing Facility | | | | 1 | | | 2 | | | | | | | | 1 | | | | | | | | | | | | | | |
| Nursing Facility | | | 1 | | 2 | | | | | | 2 | 1 | | | | | | | | | | | 1 | | | | | 1 | |
| Temporary Lodging | | | | 2 | | | | | | | | 3 | 1 | | | | | | | | 1 | | | | | | | 1 | |
| Psych. Residential | | | | 1 | 1 | | | | | 1 | | 1 | | | 1 | 1 | 2 | | | 2 | 1 | | | | 1 | 1 | | 3 | |
| On Campus Outpatient Hospital | | | | 1 | | | | | | | 2 | | 1 | | | | | | 1 | 2 | 3 | | | 1 | 3 | 2 | | 2 | |
| Group Home | 1 | | 1 | 3 | 2 | | 1 | 2 | 3 | 1 | 2 | 1 | | 1 | 2 | 2 | 1 | 1 | | 2 | 2 | | 2 | | | 1 | | 1 | |
| School | 1 | 1 | 1 | 2 | | 4 | 2 | | 2 | | 1 | 1 | 4 | 2 | 5 | 3 | 8 | 4 | 3 | 2 | | | | | | | | 1 | |
| Assisted Living Facility | | | 1 | 2 | 1 | 1 | 1 | 2 | 1 | 2 | 1 | | 3 | 4 | 4 | 1 | 4 | 1 | 3 | 2 | 1 | 1 | 1 | 3 | 2 | 8 | 2 | 2 | |
| Unassigned | 4 | | | 3 | | 2 | 2 | 1 | 1 | 1 | 3 | 2 | 2 | 3 | 5 | 3 | 1 | 7 | 4 | 5 | 3 | 4 | 2 | 1 | | 4 | 3 | 2 | |
| Homeless Shelter | 2 | 3 | 3 | 4 | 3 | 6 | 4 | 4 | | | 2 | | 3 | 4 | | 2 | | 3 | 5 | 4 | | 4 | 3 | 3 | 3 | 3 | 1 | 6 | 2 |
| Inpatient Hospital | 3 | 4 | 5 | 2 | 1 | 5 | 3 | 10 | 1 | 6 | 2 | 5 | 1 | 5 | 2 | 5 | 4 | 5 | 1 | 4 | 1 | 7 | 1 | 4 | 1 | 3 | 3 | 3 | 8 |
| Inpatient Psychiatric Facility | 6 | 9 | 5 | 10 | 10 | 7 | 9 | 9 | 5 | 7 | 3 | 5 | 2 | 3 | 4 | 6 | 4 | 6 | 5 | 3 | 5 | 5 | 7 | 5 | 4 | 8 | 1 | 6 | |
| Prison Correctional Facility | 14 | 6 | 10 | 12 | 12 | 13 | 11 | 9 | 6 | 11 | 8 | 7 | 11 | 8 | 13 | 12 | 6 | 6 | 8 | 6 | 10 | 11 | 12 | 10 | 5 | 9 | 17 | 13 | |
| Emergency Room Hospital | 25 | 26 | 19 | 18 | 25 | 27 | 22 | 26 | 26 | 23 | 14 | 26 | 27 | 23 | 25 | 23 | 22 | 27 | 26 | 23 | 28 | 30 | 17 | 34 | 27 | 28 | 29 | 21 | |
| Other Place of Service | 14 | 31 | 31 | 46 | 37 | 33 | 35 | 39 | 20 | 28 | 41 | 41 | 53 | 34 | 47 | 42 | 22 | 42 | 37 | 17 | 39 | 35 | 40 | 22 | 19 | 45 | 22 | 27 | |
| Home | 51 | 47 | 39 | 33 | 41 | 41 | 43 | 51 | 38 | 45 | 33 | 44 | 42 | 46 | 54 | 45 | 46 | 42 | 44 | 64 | 64 | 52 | 48 | 32 | 52 | 47 | 44 | 39 | |
| Telehealth | 107 | 82 | 97 | 68 | 43 | 50 | 67 | 65 | 64 | 55 | 58 | 57 | 72 | 81 | 72 | 69 | 78 | 49 | 57 | 54 | 63 | 83 | 69 | 80 | 59 | 69 | 66 | 57 | |
| Office | 108 | 97 | 111 | 122 | 144 | 119 | 127 | 123 | 145 | 138 | 123 | 127 | 140 | 146 | 136 | 126 | 156 | 135 | 115 | 123 | 112 | 152 | 128 | 141 | 145 | 140 | 109 | 111 | |

Place of Service -Investigations, percent of total by week



| | 2024 week 07 | 2024 week 08 | 2024 week 09 | 2024 week 10 | 2024 week 11 | 2024 week 12 | 2024 week 13 | 2024 week 14 | 2024 week 15 | 2024 week 16 | 2024 week 17 | 2024 week 18 | 2024 week 19 | 2024 week 20 | 2024 week 21 | 2024 week 22 | 2024 week 23 | 2024 week 24 | 2024 week 25 | 2024 week 26 | 2024 week 27 | 2024 week 28 | 2024 week 29 | 2024 week 30 | 2024 week 31 | 2024 week 32 | 2024 week 33 | 2024 week 34 | |
|--------------------------------|--------------|--------------|--------------|--------------|--------------|--------------|--------------|--------------|--------------|--------------|--------------|--------------|--------------|--------------|--------------|--------------|--------------|--------------|--------------|--------------|--------------|--------------|--------------|--------------|--------------|--------------|--------------|--------------|---|
| Hospice | | | | | | | | | | | | | | | | | | | | | | | | | | | | | |
| Custodial Care Facility | | | | | | | | 1 | | | | | | | | | | | | | | | | | | | | | |
| Urgent Care Facility | | | | | | | | | | | | | | | | | | | | | | | | | | | | | |
| Residential SUD | | | | | | | | | | | | | | | 1 | | | | | | | | | | | | | | |
| School | | | | | | | | | | | | 1 | | | | 1 | | | | | | | | | | | | | |
| Nursing Facility | | | 1 | | 1 | | | | | | | 1 | | | | | | | | | | | | | | | | | |
| Homeless Shelter | | | | | 2 | | | | | | | | | 1 | | | | | | | | 1 | | | | | | | |
| Community Mental Health Center | 1 | | | | | | 1 | 2 | | | | | | | | | | | | | | | | | | | | | 1 |
| Skilled Nursing Facility | | | | | | | 2 | | 1 | | | | | | 1 | | | | | | | | | | | | 1 | | 1 |
| Psych. Residential | | | | | | | | | | 1 | | 1 | | 1 | | 1 | | | | | 1 | | | | 1 | 1 | | 3 | |
| On Campus Outpatient Hospital | | | | | | | | | | | 2 | | | | 1 | | | 1 | 1 | 2 | | 1 | 2 | 2 | 1 | 2 | 1 | 2 | 1 |
| Unassigned | 1 | | | 2 | | | | 1 | 1 | 1 | 3 | | 1 | 1 | 1 | 1 | 1 | | | 2 | 1 | 2 | 1 | | | 2 | 1 | 1 | |
| Office | | 2 | | | 1 | | | 1 | 1 | 1 | | 2 | 1 | | 3 | 1 | 2 | 2 | | 3 | | 1 | 1 | | 2 | | 1 | 1 | |
| Assisted Living Facility | | 1 | 2 | | 2 | 1 | 1 | | | 2 | | | | 3 | 1 | | 2 | 1 | | | 2 | 3 | | | | 4 | 2 | | |
| Group Home | 1 | | 3 | 3 | 3 | 2 | 1 | 2 | 2 | 2 | 2 | | 1 | 1 | 1 | 2 | 2 | 2 | | 1 | | 2 | 1 | | 2 | 1 | 4 | | |
| Telehealth | 1 | 3 | 2 | 2 | 3 | 2 | 1 | 2 | 2 | 1 | 1 | | 1 | 1 | 1 | 2 | 1 | 4 | 3 | | 2 | 2 | 2 | 1 | 1 | 1 | 2 | | |
| Other Place of Service | 5 | 2 | 5 | 4 | 4 | 3 | 4 | 3 | 6 | 1 | 5 | 4 | 5 | 10 | 7 | 3 | 5 | 4 | 1 | 2 | 3 | 6 | 3 | 1 | 2 | 4 | 4 | 2 | |
| Inpatient Hospital | 3 | 3 | 5 | 3 | 2 | 5 | 2 | 8 | 7 | 5 | 6 | 6 | 4 | 5 | 4 | 7 | 7 | 10 | 5 | 7 | 4 | 6 | 2 | 5 | 5 | 3 | 6 | 9 | |
| Inpatient Psychiatric Facility | 12 | 10 | 9 | 13 | 12 | 11 | 16 | 15 | 10 | 9 | 6 | 9 | 3 | 3 | 8 | 10 | 11 | 6 | 7 | 5 | 7 | 9 | 8 | 13 | 8 | 7 | 6 | 6 | |
| Prison Correctional Facility | 16 | 13 | 19 | 22 | 17 | 16 | 13 | 14 | 14 | 16 | 12 | 14 | 14 | 16 | 15 | 19 | 14 | 9 | 15 | 12 | 14 | 16 | 15 | 12 | 14 | 10 | 15 | 19 | |
| Home | 19 | 17 | 19 | 21 | 23 | 17 | 18 | 17 | 22 | 20 | 19 | 20 | 13 | 18 | 15 | 19 | 19 | 19 | 19 | 23 | 20 | 24 | 11 | 18 | 14 | 22 | 20 | 14 | |
| Emergency Room Hospital | 32 | 33 | 30 | 29 | 28 | 35 | 32 | 35 | 39 | 28 | 16 | 29 | 28 | 27 | 28 | 37 | 32 | 35 | 32 | 27 | 28 | 37 | 24 | 36 | 36 | 28 | 29 | 28 | |

North Sound BH ASO Walkaway Chart 02/11/24 to 08/24/24



| | 2023 Week 02 | 2023 Week 04 | 2023 Week 05 | 2023 Week 10 | 2023 Week 11 | 2023 Week 13 | 2023 Week 15 | 2023 Week 17 | 2023 Week 19 | 2023 Week 20 | 2023 Week 22 | 2023 Week 24 | 2023 Week 27 | 2023 Week 28 | 2023 Week 29 | 2023 Week 30 | 2023 Week 35 | 2023 Week 36 | 2023 Week 43 | 2023 Week 47 | 2023 Week 48 | 2023 Week 49 | 2023 Week 51 | 2024 Week 03 | 2024 Week 08 | 2024 Week 12 | 2024 Week 15 | 2024 Week 21 | 2024 Week 24 | 2024 Week 25 | 2024 Week 30 |
|---------------------------|--------------|--------------|--------------|--------------|--------------|--------------|--------------|--------------|--------------|--------------|--------------|--------------|--------------|--------------|--------------|--------------|--------------|--------------|--------------|--------------|--------------|--------------|--------------|--------------|--------------|--------------|--------------|--------------|--------------|--------------|--------------|
| Cascade Valley Hospital | | | 1 | | | 1 | | | | | 1 | | 2 | | | | | 1 | | | | | 1 | | | | | | | | |
| Island Co Jail | | | | | | | | | | | | | | | | | | | | | | | | | 1 | | | | | | |
| Island Hospital | | | | | | 1 | | | | | 2 | | | 1 | 1 | | | | | | | | | | | | 1 | 1 | | | |
| N/A San Juan Jail | | | | | | | | | | | | | | | | | | | | | | | | | | | | | | 1 | |
| Peace Health | | | | | | | | | | | | | | | | | | | | | | | | | | | | | | 1 | |
| Peace Health United | 1 | | | | | | | | | | | | | | | | | | | | | | | | | | | | | | |
| Peace Island Medical | | | | | | | | | | | | | | | | | | | 1 | | | | | | | | | | | | |
| Skagit Valley | | | | | 1 | | | | | | | | | | | | | | | | 2 | 2 | 1 | | | | | | | | |
| St Joes | | | | | | | | | | | 1 | | | | | | | | | | | | | | 1 | | | | | | |
| St Joseph | | | | | | | | | | | | | | | | | | | | | | | | | | 1 | | | | | |
| St. Joes | | | | | | | | 1 | | | | 1 | | | | | | | | | | | | | | | | | | | |
| St. Joes, Peace Health | | | | | | | | | | | | | | | | 1 | | | | | | | | | | | | | | | |
| St. Joseph Medical Center | | | | 1 | | | | | | | | | | | | | | | | | | | | | | | | | | | |
| St. Josephs | | | | | | | 1 | | | 1 | | | | | | | | | | | | | | | | | | | | | |
| St. Joseph's Hospital | | | | | 1 | | | | | | | | | | | | | | | | | | | | | | | | | | |
| United General | | 1 | | | | | | | | 1 | | | 1 | | | | | | | | | | | 1 | | | | | | 1 | |
| Whidbey Medical Center | | | | | | | | | | | | | | | | | 1 | | | | | | | | | | | | | | |
| Whidby Health | | | | | | | | | | | | | | | | | | | | | | | | | | | | | | | 1 |